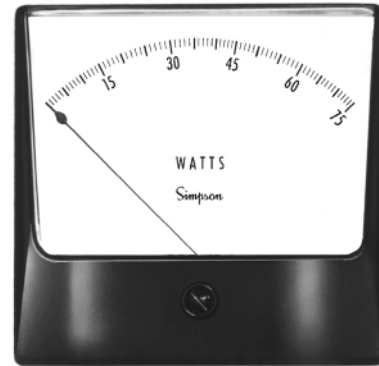


- Calibration for Either Magnetic or Non-Magnetic Panel Mounting
- $\pm 2\%$  F.S. Accuracy ( $\pm 3\%$  F.S. for Compensated Type)
- Compensated Wattmeters for Low Value Power Measurement
- Wide-Angle Visibility
- Two Popular Sizes: 3-1/2", 4-1/2"
- Phenolic Cases with Acrylic Windows
- Dial Illumination and Bezel Kits Available

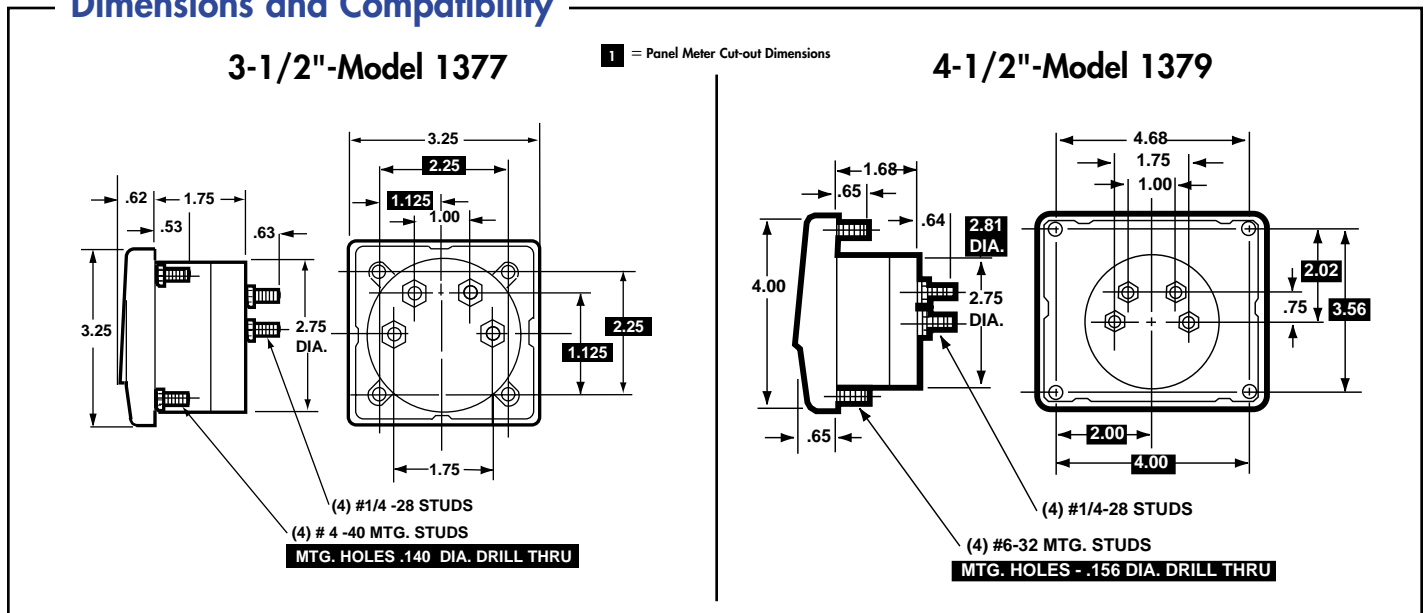


Model Number	Size	Meter Movement
1377	3-1/2"	Dynamometer
1379	4-1/2"	Dynamometer

Molded in a black phenolic case, this distinctive style meter with clear acrylic window provides wide-angle visibility and thin profile panel mounting. Available in 3-1/2" and 4-1/2" sizes, the Wide-Vue is ideal for reliable measurement of power from 10 to 3000 watts. Due to power dissipation, errors are usually prevalent in standard wattmeters at low values of power. This error is corrected in Simpson's Compensated Wattmeters. Standard wattmeters have a single phase accuracy of  $\pm 2\%$  of full scale (F.S).

Compensated wattmeters have an accuracy of  $\pm 3\%$  of full scale. Wattmeters have the Simpson dynamometer movement that is calibrated for either magnetic or non-magnetic panels and for a frequency range of 25-125 Hz. The dynamometer movement is air-damped, utilizing the same high quality pivots and jewels as the other fine Simpson meters to support the moving element. This style of meter is ideal for many other electrical functions. See the "Function Reference Table."

### Dimensions and Compatibility



### Compatibility Reference Table

Manufacturer	Size/Model
	3 1/2"
Crompton Fiesta	Model 016

## Specifications

<b>Accuracy:</b>	±2% F.S.; Compensated meters: ±3% F.S.
<b>Movement:</b>	Dynamometer
<b>Suspension:</b>	Pivot and jewel
<b>Tracking:</b>	±3%
<b>Shielding:</b>	Calibration is unaffected by magnetic panel mounting.
<b>Response</b>	
<b>Time:</b>	1.5 seconds maximum
<b>Overload</b>	
<b>(1 sec.):</b>	10 times F.S.
<b>Overload</b>	
<b>(Continuous):</b>	1.5 times F.S.
<b>Repeatability:</b>	2%

<b>Dial:</b>	Sharp clear scale. Each dial arc is calibrated to track the specific type of movement used.
<b>Resistance:</b>	±15%
<b>Operating Temperature:</b>	-4°F to +149°F (-20°C to +65°C)
<b>Case:</b>	High density black plastic
<b>Pointer:</b>	Spade pointer with black matte finish
<b>Scale Length:</b>	Model 1377: 3.14" (79.9mm); Model 1379: 3.93" (100.0mm)
<b>Net Weight:</b>	Model 1377: 9oz (0.26kg); Model 1379: 10oz (0.28kg)

## Ordering Information

### Wattmeters Dynamometer Type, Single-Phase

Range	Maximum		Model/Size and Catalog Number	
	Volts	Amps	3-1/2" Model 1377	4-1/2" Model 1379
0-75	150	1.0	<>	10960
0-150	150	2.0	<>	10970
0-300	150	4.0	<>	10975
0-600	300	4.0	<>	10980
0-750	150	10.0	<>	10990
01500	300	10.0	<>	11000
0-3000	300	20.0	<>	11010

### Compensated Wattmeters\* Accuracy ±3%

The standard wattmeter is suitable for use at low values of power because the power dissipated in the meter itself becomes an appreciable portion of the meter reading. This error is corrected in a Compensated wattmeter.

Range	Maximum		Model/Size and Catalog Number	
	Volts	Amps	<>	
0-10	150	.175	<>	10930
0-20	150	.400	<>	10940

- \* Wattmeters calibrated for either magnetic on non-magnetic panels and for a frequency range of 25-125Hz.
- <> Available on special order.

## Function Reference

For your convenience, the table below lists Wide-Vue models for other electrical monitoring functions and page reference.

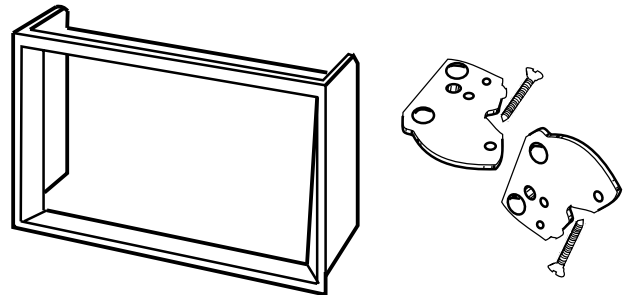
Function	Section	Page
AC Current	E	11
AC Voltage	E	31
DC Current	E	51
DC Voltage	E	71

## Accessories

Bezels are available for Wide-Vue style meters to give your equipment a modern appearance. Bezels are die cast with an attractive black satin finish and are designed for behind panel mounting on material thickness of 1/8" to 3/16". Bezel kits include all mounting hardware and can be ordered with meters or separately.

Illumination Kits are available for the 4-1/2" meters. The kit includes a pair of 6.3 volt bulbs, .25 amps. The bulbs are mounted above the meter, and are designed to be used with the bezel kits. The kit illuminates the meter for ease of reading in dark areas. For more detailed information see the Accessory section.

Model Number	Catalog Number
1357 (3-1/2") Bezel	01253
1359 (4-1/2") Bezel	01123
1359 Illumination Kit	01165



## Engineer's Notes

---



---



---



---



---



---



---



---



---



---